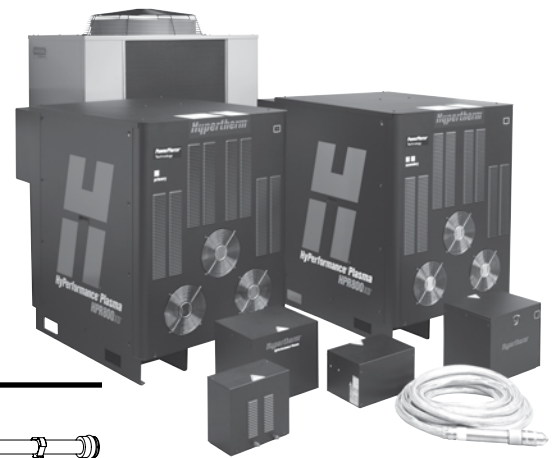


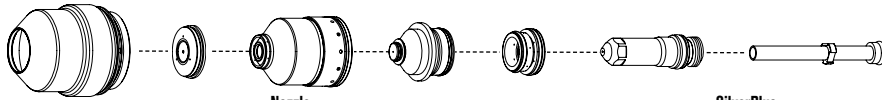
# Hypertherm®

## HyPerformance® Plasma HPR800XD®



### Consumables

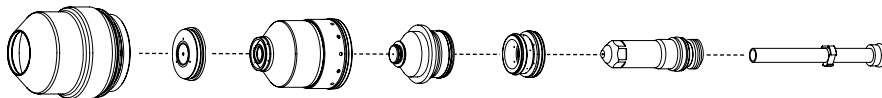
#### Mild steel



	Shield cap	Shield	Nozzle retaining cap	Nozzle	Swirl ring	Electrode	SilverPlus electrode	Water tube
<b>30 A</b>	220747	220194	220754	220193	220180	220192	—	220340
<b>50 A</b>	220747	220555	220754	220554	220553	220552	—	220340
<b>80 A</b>	220747	220189	220756	220188	220179	220187	—	220340
<b>130 A</b>	220747	220183	220756	220182	220179	220181	220665	220340
<b>200 A</b>	220637	220761	220757	220354	220353	220352	220666	220340
<b>260 A</b>	220637	220764	220760	220439	220436	220435	220668	220340
<b>400 A</b>	220637	220636	220635	220632	220631	220629	—	220571
<b>80 A bevel</b>	220637	220742	220845	220806	220179	220802	—	220700
<b>130 A bevel</b>	220637	220742	220740	220646	220179	220649	—	220700
<b>200 A bevel</b>	220637	220658	220845	220659	220353	220662	—	220700
<b>260 A bevel</b>	220637	220741	220740	220542	220436	220541	—	220571
<b>*260 A bevel</b>	220637	220897	220896	220898	220436	220899	—	220571
<b>400 A bevel</b>	220637	220636	220635	220632	220631	220629	—	220571

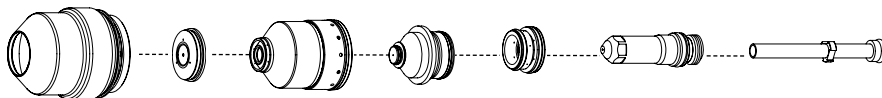
\* Recommended for use if you have excessive slag, or the torch is misfiring, when using standard bevel consumables.

#### Stainless steel

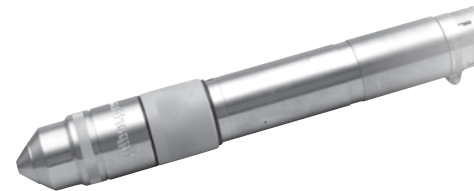


	Shield cap	Shield	Nozzle retaining cap	Nozzle	Swirl ring	Electrode	Water tube
<b>45 A</b>	220747	220202	220755	220201	220180	220308	220340
<b>60 A HDi</b>	220747	220815	220814	220847	220180	220339	220340
<b>80 A</b>	220747	220338	220755	220337	220179	220339	220340
<b>130 A</b>	220747	220198	220755 (H35)	220197	220179	220307	220340
			220756 (N <sub>2</sub> )				
<b>200 A</b>	220637	220762	220758	220343	220342	220307	220340
<b>260 A</b>	220637	220763	220758	220406	220405	220307	220340
<b>400 A</b>	220637	220707	220712	220708	220405	220709	220571
<b>600 A</b>	220637	220707	220635 (H35)	220859	220353 (H35)	220709	220571
			220885 (N <sub>2</sub> )		220405 (N <sub>2</sub> )		
<b>100 mm (4") and below</b>	220637	220886	220885	220884	220353	220882	220881
<b>800 A above 100 mm (4")</b>	220637	220886	220712	220884	220350	220882	220881
<b>130 A bevel</b>	220637	220738	220739	220656	220179	220606	220571
<b>260 A bevel</b>	220637	220738	220739	220607	220405	220606	220571
<b>400 A bevel</b>	220637	220707	220712	220708	220405	220709	220571
<b>600 A bevel</b>	220637	220707	220635 (H35)	220859	220353 (H35)	220709	220571
			220885 (N <sub>2</sub> )		220405 (N <sub>2</sub> )		
<b>100 mm (4") and below</b>	220637	220886	220885	220884	220353	220882	220881
<b>800 A above 100 mm (4")</b>	220637	220886	220712	220884	220350	220882	220881

#### Aluminum



	Shield cap	Shield	Nozzle retaining cap	Nozzle	Swirl ring	Electrode	Water tube
<b>45 A</b>	220747	220202	220756	220201	220180	220308	220340
<b>130 A</b>	220747	220198	220755 (H35)	220197	220179	220307 (H35)	220340
			220756 (Air)			220181 (Air)	
<b>200 A</b>	220637	220762	220759	220346	220342	220307	220340
<b>260 A</b>	220637	220763	220758	220406	220405	220307	220340
<b>400 A</b>	220637	220707	220712	220708	220405	220709	220571
<b>600 A</b>	220637	220707	220712 (H35)	220859	220353 (H35)	220709	220571
			220885 (N <sub>2</sub> )		220405 (N <sub>2</sub> )		
<b>100 mm (4") and below</b>	220637	220886	220885	220884	220353	220882	220881
<b>800 A above 100 mm (4")</b>	220637	220886	220712	220884	220350	220882	220881



#### TECHNOLOGIES

- Advanced Axial Swirl Ring**
- Chambered Swirl Ring**
- Conical Flow™**
- CoolCore®**
- CoolFlow™**
- HyDefinition®**
- HyLife®**
- LongLife®**
- PowerPierce®**
- SilverPlus®**
- TrueFlow™**
- Vented Shield**
- HDi®**

# HyPerformance® Plasma HPR800XD®

## Torch assembly options

### Standard leads

Lead length	Part number	
	6' gas	8' gas
2 m (6')	228291	228410
3 m (10')	228292	228411
4.5 m (15')	228293	228412
6 m (20')	228294	228413
7.5 m (25')	228295	228414
10 m (35')	228296	228415
15 m (50')	228297	228416

### Robotic/Bevel leads

Lead length	Part number	
	6' gas	8' gas
2 m (6')	228514	228516
2.4 m (8')	228515	228517
3 m (10')	228475	228482
3.6 m (12')	228476	228483
4.5 m (15')	228477	228484
6 m (20')	228478	228485
7.5 m (25')	228479	228486
10 m (35')	228480	228487
15 m (50')	228481	228488

### Torch mounting sleeves

Description	Length	Diameter	Part number
Standard	178 mm (7")	50.8 mm (2")	220789
Short	114 mm (4.5")	50.8 mm (2")	220788
Extended	248 mm (9.75")	50.8 mm (2")	220790
Rotational	146 mm (5.5")	50.8 mm (2")	220864

### Quick-disconnect receptacle

220705

### HyPerformance HPRXD torch main body

220706

### Additional parts available (not shown)

Mild steel consumables starter kit (400 amps and below, mild steel)	228367
Aluminum/Stainless steel consumables starter kit (600/800 amps, aluminum/stainless steel)	228603
Aluminum/Stainless steel consumables starter kit (400 amps and below, aluminum/stainless steel)	228368
Torch kit, o-rings, water tube	128879
Quick-disconnect kit, o-ring and connector	128880
Consumables removal tool	104119
Silicon lubricant for o-rings	027055
Preventive maintenance kit (200 – 240 V)	228613
Preventive maintenance kit (380 – 600 V)	228622

### Additional torches available

Part number	130 A	260 A	400 A	800 A	Standard Consumables	Bevel Consumables	Standard Sleeve	Short Sleeve	Extended Sleeve	Robotic Sleeve
228520	■					■	■			
228633	■				■			■		
228989	■					■		■		
228551	■					■		■		
228990	■					■			■	
428311		■				■				■
228521		■				■	■			
228634		■			■			■		
228991		■				■		■		
228992		■				■			■	
428312		■				■				■
228354			■		■	■	■			
228987			■		■	■		■		
228988			■		■	■			■	
428313			■		■	■				■
228599				■	■	■	■			

Hypertherm, HyPerformance, HPR, Advanced axial swirl ring, Chambered swirl ring, Conical Flow, CoolCore, CoolFlow, HyDefinition, HyLife, LongLife, PowerPierce, SilverPlus, TrueFlow, Vented shield and HD are trademarks of Hypertherm, Inc. and may be registered in the United States and/or other countries



Torch leads



Torch mounting sleeve



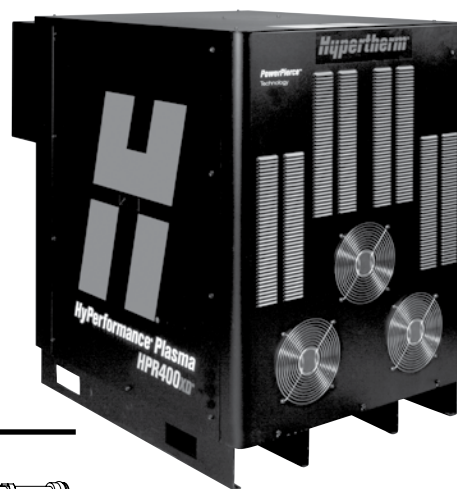
Quick-disconnect receptacle



HyPerformance HPRXD torch main body

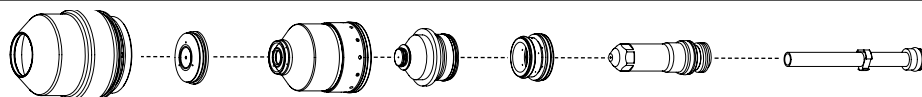
# Hypertherm®

## HyPerformance® Plasma HPR400xd®



### Consumables

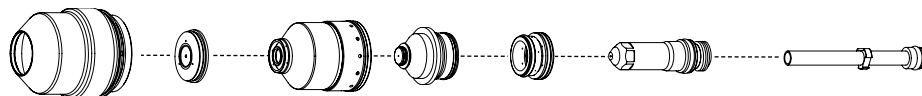
#### Mild steel



	Shield cap	Shield	Nozzle retaining cap	Nozzle	Swirl ring	Electrode	SilverPlus electrode	Water tube
<b>30 A</b>	220747	220194	220754	220193	220180	220192	—————	220340
<b>50 A</b>	220747	220555	220754	220554	220553	220552	—————	220340
<b>80 A</b>	220747	220189	220756	220188	220179	220187	—————	220340
<b>130 A</b>	220747	220183	220756	220182	220179	220181	220665	220340
<b>200 A</b>	220637	220761	220757	220354	220353	220352	220666	220340
<b>260 A</b>	220637	220764	220760	220439	220436	220435	220668	220340
<b>400 A</b>	220637	220636	220635	220632	220631	220629	—————	220571
<b>80 A bevel</b>	220637	220742	220845	220806	220179	220802	—————	220700
<b>130 A bevel</b>	220637	220742	220740	220646	220179	220649	—————	220700
<b>200 A bevel</b>	220637	220658	220845	220659	220353	220662	—————	220700
<b>260 A bevel</b>	220637	220741	220740	220542	220436	220541	—————	220571
<b>*260 A bevel</b>	220637	220897	220896	220898	220436	220899	—————	220571
<b>400 A bevel</b>	220637	220636	220635	220632	220631	220629	—————	220571

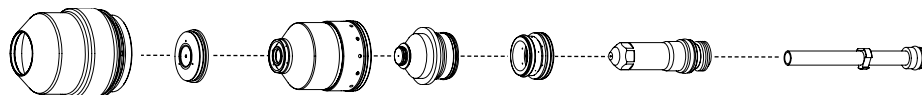
\* Recommended for use if you have a problem with excessive slag, or problems with the torch misfiring, when using standard bevel consumables.

#### Stainless steel



	Shield cap	Shield	Nozzle retaining cap	Nozzle	Swirl ring	Electrode	Water tube
<b>45 A</b>	220747	220202	220755	220201	220180	220308	220340
<b>60 A HDi</b>	220747	220815	220814	220847	220180	220339	220340
<b>80 A</b>	220747	220338	220755	220337	220179	220339	220340
<b>130 A</b>	220747	220198	220755 (H35) 220756 (N <sub>2</sub> )	220197	220179	220307	220340
<b>200 A</b>	220637	220762	220758	220343	220342	220307	220340
<b>260 A</b>	220637	220763	220758	220406	220405	220307	220340
<b>400 A</b>	220637	220707	220712	220708	220405	220709	220571
<b>130 A bevel</b>	220637	220738	220739	220656	220179	220606	220571
<b>260 A bevel</b>	220637	220738	220739	220607	220405	220606	220571
<b>400 A bevel</b>	220637	220707	220712	220708	220405	220709	220571

#### Aluminum



	Shield cap	Shield	Nozzle retaining cap	Nozzle	Swirl ring	Electrode	Water tube
<b>45 A</b>	220747	220202	220756	220201	220180	220308	220340
<b>130 A</b>	220747	220198	220755 (H35) 220756 (Air)	220197	220179	220307 (H35) 220181 (Air)	220340
<b>200 A</b>	220637	220762	220759	220346	220342	220307	220340
<b>260 A</b>	220637	220763	220758	220406	220405	220307	220340
<b>400 A</b>	220637	220707	220712	220708	220405	220709	220571



#### TECHNOLOGIES

**Advanced Axial Swirl Ring**  
**Chambered Swirl Ring**  
**Conical Flow™**  
**CoolCore®**  
**CoolFlow™**  
**HyDefinition®**  
**HyLife®**  
**LongLife®**  
**PowerPierce®**  
**SilverPlus®**  
**TrueFlow™**  
**Vented Shield**  
**HDi®**

# HyPerformance<sup>®</sup> Plasma HPR400XD<sup>®</sup>

## Torch assembly options

### Standard leads

Lead length	Part number	
	6' gas	8' gas
2 m (6')	228291	228410
3 m (10')	228292	228411
4.5 m (15')	228293	228412
6 m (20')	228294	228413
7.5 m (25')	228295	228414
10 m (35')	228296	228415
15 m (50')	228297	228416
20 m (65')	228547	228516

### Robotic/Bevel leads

Lead length	Part number	
	6' gas	8' gas
2 m (6')	228514	228516
2.4 m (8')	228515	228517
3 m (10')	228475	228482
3.6 m (12')	228476	228483
4.5 m (15')	228477	228484
6 m (20')	228478	228485
7.5 m (25')	228479	228486
10 m (35')	228480	228487
15 m (50')	228481	228488

### Mounting sleeves

Description	Length	Diameter	Part number
Standard	181 mm (7")	50.8 mm (2")	220789
Short	114 mm (4.5")	50.8 mm (2")	220788
Extended	248 mm (9.75")	50.8 mm (2")	220790
Rotational	146 mm (5.5")	50.8 mm (2")	220864

### Quick-disconnect receptacle

220705

### HyPerformance HPRXD torch

220706

### Additional parts available (not shown)

Mild steel consumables starter kit	(All amps, mild steel)	228367
Aluminum/Stainless steel consumables starter kit	(All amps, aluminum/stainless steel)	228368
Torch kit, o-rings, water tube		128879
Quick-disconnect kit, o-ring and connector		128880
Consumables removal tool		104119
Silicon lubricant for o-rings		027055
Preventive maintenance kit (200 – 240 V)		228369
Preventive maintenance kit (380 – 600 V)		228370

### Additional torches available

Part number	130 A	260 A	400 A	Standard Consumables	Bevel Consumables	Standard Sleeve	Short Sleeve	Extended Sleeve	Robotic Sleeve
228520	■				■	■			
228633	■			■			■		
228989	■				■		■		
228551	■				■		■		
228990	■				■			■	
428311		■			■				■
228521		■			■	■			
228634		■		■			■		
228991		■			■		■		
228992		■			■			■	
428312		■			■				■
228354			■	■	■	■			
228987			■	■	■		■		
228988			■	■	■			■	
428313			■	■	■				■



Leads



Mounting sleeve



Quick-disconnect receptacle



HyPerformance HPRXD torch

Hypertherm, HyPerformance, HPR, Advanced axial swirl ring, Chambered swirl ring, Conical Flow, CoolCore, CoolFlow, HyDefinition, HyLife, LongLife, PowerPierce, SilverPlus, TrueFlow, Vented shield and HD are trademarks of Hypertherm, Inc. and may be registered in the United States and/or other countries

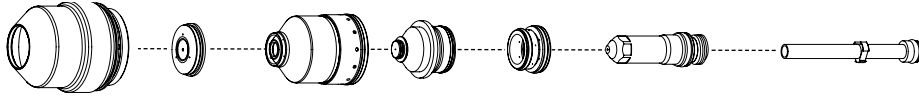
# Hypertherm®

## HyPerformance® Plasma HPR260XD®



### Consumables

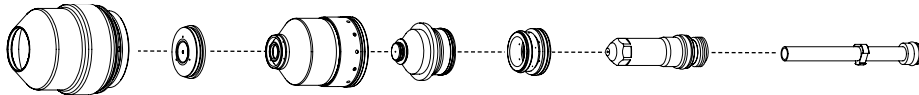
#### Mild steel



	Shield cap	Shield	Nozzle retaining cap	Nozzle	Swirl ring	Electrode	SilverPlus electrode	Water tube
<b>30 A</b>	220747	220194	220754	220193	220180	220192	—————	220340
<b>50 A</b>	220747	220555	220754	220554	220553	220552	—————	220340
<b>80 A</b>	220747	220189	220756	220188	220179	220187	—————	220340
<b>130 A</b>	220747	220183	220756	220182	220179	220181	220665	220340
<b>200 A</b>	220637	220761	220757	220354	220353	220352	220666	220340
<b>260 A</b>	220637	220764	220760	220439	220436	220435	220668	220340
<b>80 A bevel</b>	220637	220742	220845	220806	220179	220802	—————	220700
<b>130 A bevel</b>	220637	220742	220740	220646	220179	220649	—————	220700
<b>200 A bevel</b>	220637	220658	220845	220659	220353	220662	—————	220700
<b>260 A bevel</b>	220637	220741	220740	220542	220436	220541	—————	220571
<b>*260 A bevel</b>	220637	220897	220896	220898	220436	220899	—————	220571

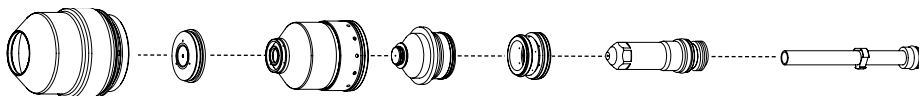
\* Recommended for use if you have a problem with excessive slag, or problems with the torch misfiring, when using standard bevel consumables.

#### Stainless steel



	Shield cap	Shield	Nozzle retaining cap	Nozzle	Swirl ring	Electrode	Water tube
<b>45 A</b>	220747	220202	220755	220201	220180	220308	220340
<b>60 A HDi</b>	220747	220815	220814	220847	220180	220339	220340
<b>80 A</b>	220747	220338	220755	220337	220179	220339	220340
<b>130 A</b>	220747	220198	220755 (H35) 220756 (N <sub>2</sub> )	220197	220179	220307	220340
<b>200 A</b>	220637	220762	220758	220343	220342	220307	220340
<b>260 A</b>	220637	220763	220758	220406	220405	220307	220340
<b>130 A bevel</b>	220637	220738	220739	220656	220179	220606	220571
<b>260 A bevel</b>	220637	220738	220739	220607	220405	220606	220571

#### Aluminum



	Shield cap	Shield	Nozzle retaining cap	Nozzle	Swirl ring	Electrode	Water tube
<b>45 A</b>	220747	220202	220756	220201	220180	220308	220340
<b>130 A</b>	220747	220198	220755 (H35) 220756 (Air)	220197	220179	220307 (H35) 220181 (Air)	220340
<b>200 A</b>	220637	220762	220759	220346	220342	220307	220340
<b>260 A</b>	220637	220763	220758	220406	220405	220307	220340



#### TECHNOLOGIES

- Chambered Swirl Ring**
- Conical Flow™**
- CoolCore®**
- CoolFlow™**
- HyDefinition®**
- HyLife®**
- LongLife®**
- PowerPierce®**
- SilverPlus®**
- TrueFlow™**
- Vented Shield**
- HDi®**

# HyPerformance<sup>®</sup> Plasma HPR260XD<sup>®</sup>

## Torch assembly options

### Standard leads

Lead length	Part number	
	6' gas	8' gas
2 m (6')	228291	228410
3 m (10')	228292	228411
4.5 m (15')	228293	228412
6 m (20')	228294	228413
7.5 m (25')	228295	228414
10 m (35')	228296	228415
15 m (50')	228297	228416
20 m (65')	228547	228516

### Robotic/Bevel leads

Lead length	Part number	
	6' gas	8' gas
2 m (6')	228514	228516
2.4 m (8')	228515	228517
3 m (10')	228475	228482
3.6 m (12')	228476	228483
4.5 m (15')	228477	228484
6 m (20')	228478	228485
7.5 m (25')	228479	228486
10 m (35')	228480	228487
15 m (50')	228481	228488

### Mounting sleeves

Description	Length	Diameter	Part number
Standard	181 mm (7")	50.8 mm (2")	220789
Short	114 mm (4.5")	50.8 mm (2")	220788
Extended	248 mm (9.75")	50.8 mm (2")	220790
Rotational	146 mm (5.5")	50.8 mm (2")	220864

### Quick-disconnect receptacle

220705

### HyPerformance HPRXD torch

220706

### Additional parts available (not shown)

Mild steel consumables starter kit	(All amps, mild steel)	228422
Aluminum/Stainless steel consumables starter kit	(All amps, aluminum/stainless steel)	228423
Torch kit, o-rings, water tube		128879
Quick-disconnect kit, o-ring and connector		128880
Consumables removal tool		104119
Silicon lubricant for o-rings		027055
Preventive maintenance kit (200 – 240 V)		228606
Preventive maintenance kit (380 – 600 V)		228623

### Additional torches available

Part number	130 A	260 A	Standard Consumables	Bevel Consumables	Standard Sleeve	Short Sleeve	Extended Sleeve	Robotic Sleeve
228520	■			■	■			
228633	■		■			■		
228989	■			■		■		
228551	■			■		■		
228990	■			■			■	
428311		■		■				■
228521		■		■	■			
228634		■	■			■		
228991		■		■		■		
228992		■		■			■	
428312		■		■				■



Leads



Mounting sleeve



Quick-disconnect receptacle



HyPerformance HPRXD torch

Hypertherm, HyPerformance, HPR, Advanced axial swirl ring, Chambered swirl ring, Conical Flow, CoolCore, CoolFlow, HyDefinition, HyLife, LongLife, PowerPierce, SilverPlus, TrueFlow, Vented shield and HD are trademarks of Hypertherm, Inc. and may be registered in the United States and/or other countries

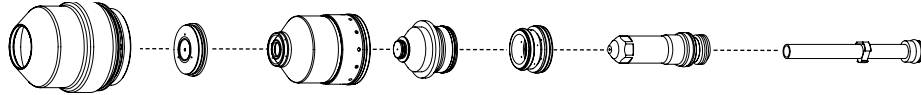
# Hypertherm®

## HyPerformance® Plasma HPR130XD®



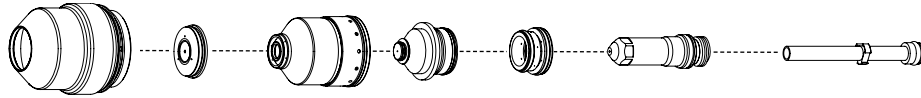
### Consumables

#### Mild steel



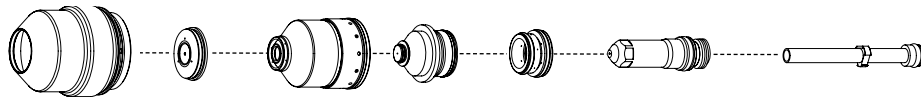
	Shield cap	Shield	Nozzle retaining cap	Nozzle	Swirl ring	Electrode	SilverPlus electrode	Water tube
<b>30 A</b>	220747	220194	220754	220193	220180	220192	—————	220340
<b>50 A</b>	220747	220555	220754	220554	220553	220552	—————	220340
<b>80 A</b>	220747	220189	220756	220188	220179	220187	—————	220340
<b>130 A</b>	220747	220183	220756	220182	220179	220181	220665	220340
<b>80 A bevel</b>	220637	220742	220845	220806	220179	220802	—————	220700
<b>130 A bevel</b>	220637	220742	220740	220646	220179	220649	—————	220700

#### Stainless steel



	Shield cap	Shield	Nozzle retaining cap	Nozzle	Swirl ring	Electrode	Water tube
<b>45 A</b>	220747	220202	220755	220201	220180	220308	220340
<b>60 A HDi</b>	220747	220815	220814	220847	220180	220339	220340
<b>80 A</b>	220747	220338	220755	220337	220179	220339	220340
<b>130 A</b>	220747	220198	220755 (H35) 220756 (N <sub>2</sub> )	220197	220179	220307	220340
<b>130 A bevel</b>	220637	220738	220739	220656	220179	220606	220571

#### Aluminum



	Shield cap	Shield	Nozzle retaining cap	Nozzle	Swirl ring	Electrode	Water tube
<b>45 A</b>	220747	220202	220756	220201	220180	220308	220340
<b>130 A</b>	220747	220198	220755 (H35) 220756 (Air)	220197	220179	220307 (H35) 220181 (Air)	220340



#### TECHNOLOGIES

**Chambered Swirl Ring**  
**Conical Flow™**  
**CoolCore®**  
**CoolFlow™**  
**HyDefinition®**  
**HyLife®**  
**LongLife®**  
**PowerPierce®**  
**SilverPlus®**  
**TrueFlow™**  
**Vented Shield**  
**HDi®**

# HyPerformance<sup>®</sup> Plasma HPR130XD<sup>®</sup>

## Torch assembly options

### Standard leads

Lead length	Part number	
	6' gas	8' gas
2 m (6')	228291	228410
3 m (10')	228292	228411
4.5 m (15')	228293	228412
6 m (20')	228294	228413
7.5 m (25')	228295	228414
10 m (35')	228296	228415
15 m (50')	228297	228416
20 m (65')	228547	228516

### Robotic/Bevel leads

Lead length	Part number	
	6' gas	8' gas
2 m (6')	228514	228516
2.4 m (8')	228515	228517
3 m (10')	228475	228482
3.6 m (12')	228476	228483
4.5 m (15')	228477	228484
6 m (20')	228478	228485
7.5 m (25')	228479	228486
10 m (35')	228480	228487
15 m (50')	228481	228488

### Mounting sleeves

Description	Length	Diameter	Part number
Standard	181 mm (7")	50.8 mm (2")	220789
Short	114 mm (4.5")	50.8 mm (2")	220788
Extended	248 mm (9.75")	50.8 mm (2")	220790
Rotational	146 mm (5.5")	50.8 mm (2")	220864

### Quick-disconnect receptacle

220705

### HyPerformance HPRXD torch

220706

### Additional parts available (not shown)

Mild steel consumables starter kit	(All amps, mild steel)	228420
Aluminum/Stainless steel consumables starter kit	(All amps, aluminum/stainless steel)	228421
Torch kit, o-rings, water tube		128879
Quick-disconnect kit, o-ring and connector		128880
Consumables removal tool		104119
Silicon lubricant for o-rings		027055
Preventive maintenance kit		228605

### Additional torches available

Part number	130 A	Standard Consumables	Bevel Consumables	Standard Sleeve	Short Sleeve	Extended Sleeve	Robotic Sleeve
228520	■		■	■			
228633	■	■			■		
228989	■		■		■		
228551	■		■		■		
428312	■		■			■	



Leads



Mounting sleeve



Quick-disconnect receptacle



HyPerformance HPRXD torch

Hypertherm, HyPerformance, HPR, Advanced axial swirl ring, Chambered swirl ring, Conical Flow, CoolCore, CoolFlow, HyDefinition, HyLife, LongLife, PowerPierce, SilverPlus, TrueFlow, Vented shield and HD are trademarks of Hypertherm, Inc. and may be registered in the United States and/or other countries