

Classifications

DIN 8555	EN 14700
MSG 6-GF-60-GP	T Fe 8

Characteristics and field of use

UTP AF ROBOTIC 600 is a seamless, chromium-alloyed, metal-cored wire for wear-resistant hardfacing applications on parts subject to a combination of pressure, impact and abrasion wear. Very good weldability in comparison to solid wires, good resistance to abrasion, minimized slag formation with easy slag removal.

Thanks to its constant wire feed and excellent weldability, this wire is especially suited for automated welding.

Application field: Cutting tools, esp. cutting edges of presses in ceramic tiles production, jaw crushers, baffle plates.

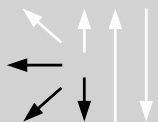
Typical analysis in %

C	Mn	Si	Cr
0.45	0.4	3.0	9.0

Typical mechanical properties

Hardness as welded: 57 - 62 HRC

Welding positions



Current type: DC (+)

Shielding gas: Ar/CO₂ (EN ISO 14175: M21)
Flow rate: 14 - 20 l/min

Recommended welding parameters

Diameter [mm]	Spools	Weight [kg]	Amperage [A]	Voltage [V]
1.2	B300	16	120-300	20-32
1.4	B300	16	150-320	20-31
1.6	B300	16	180-420	22-34

Other diameters on request.