

**State of the art,  
Turnkey, Scalable  
and effective  
welding training  
solution powered by  
Augmented Reality.**

**SOLDAMATIC**  
AUGMENTED TRAINING TECHNOLOGY FOR WELDING



A SEABERY SOLUTION



## INDEX

State Of The Art Training .....	4
HyperReal-Sim .....	5
Access Anytime From Anywhere .....	6
Welding Joints .....	8
Soldamatic Robotics .....	10
Software For Every Purpose .....	11

## STATE OF THE ART TRAINING

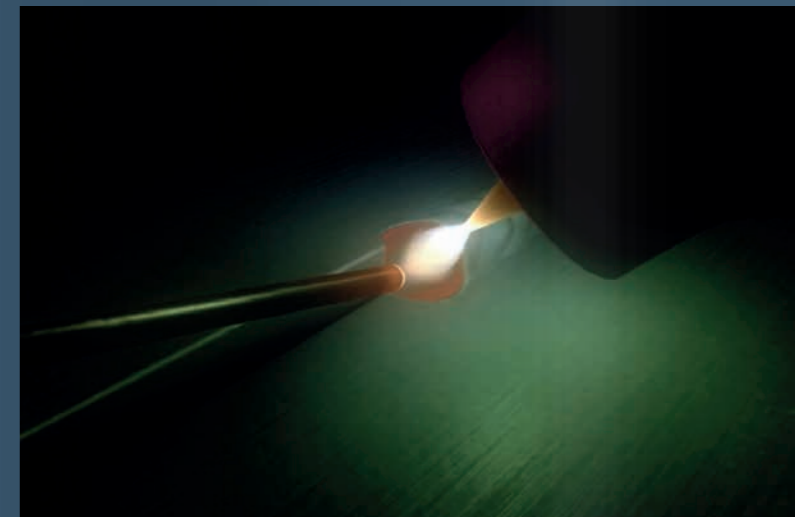
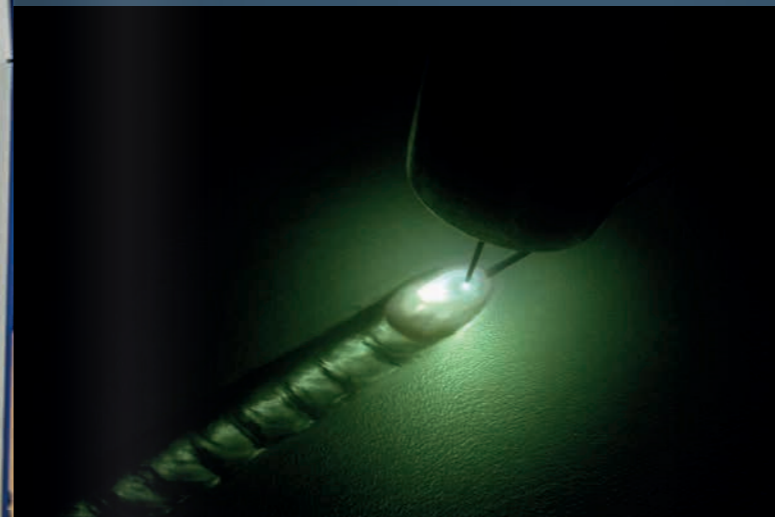
SOLDAMATIC IE REVOLUTIONIZES WELDING TRAINING CREATING THE NEXT GENERATION OF WELDERS THE MOST COMPREHENSIVE, EFFECTIVE AND MODERN WELDING TRAINING SOLUTION.



## HYPERREAL-SIM

OFFERS THE BEST, MOST REALISTIC WELDING TRAINING SYSTEM ASIDE FROM REAL WELDING.

- Power source-like controls
- Real Welding mask
- Real torches & gun
- Welding Joints
- Welding bead quality & settings
- Transfer Modes
- Remastered HD Welding Sound



Two examples of Soldamatic's welding simulation

- 34%** more certified welders than with traditional methodology
- 56%** reduction in learning time
- 68%** reduction in lab costs and environmental impact
- 84%** less accidents
- +75** countries worldwide

SOLDAMATIC IE IS AVAILABLE IN 33 LANGUAGES

- EN, ZH, KO, RO, VI, ES, IN, TH, SQ, MS, SV, DE, IT, PL, SL, TA, FR, JA, CS, SR, TE, DA, BR, TR, ID, LV, SI, RU, NL, HU, KA, KZ, LT

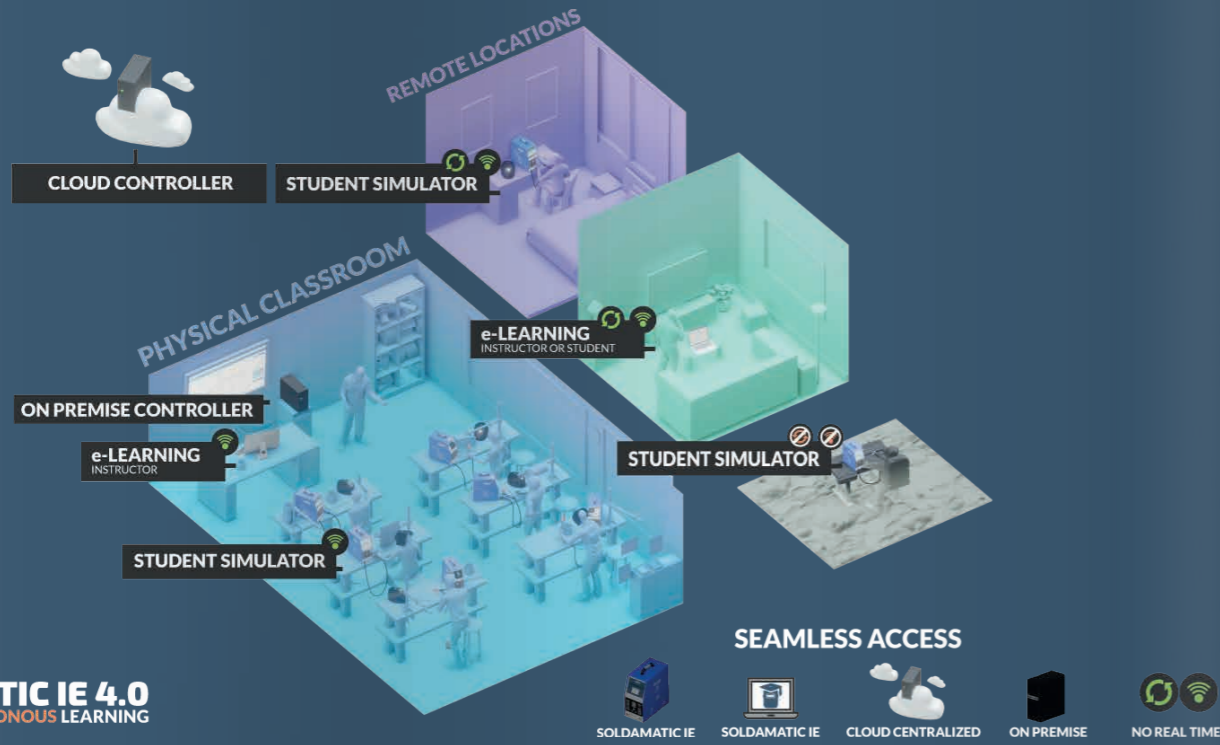
ALL THE WELDING PARAMETERS, VISUALS AND SOUND HAVE BEEN CALIBRATED AT THE REAL WELDING LAB



# ACCESS ANYTIME FROM ANYWHERE

FULLY FLEXIBLE TRAINING SOLUTION - TRANSPARENT AND CONSISTENT EXPERIENCE ON-PREMISE, REMOTE AND VIDEO LEARNING

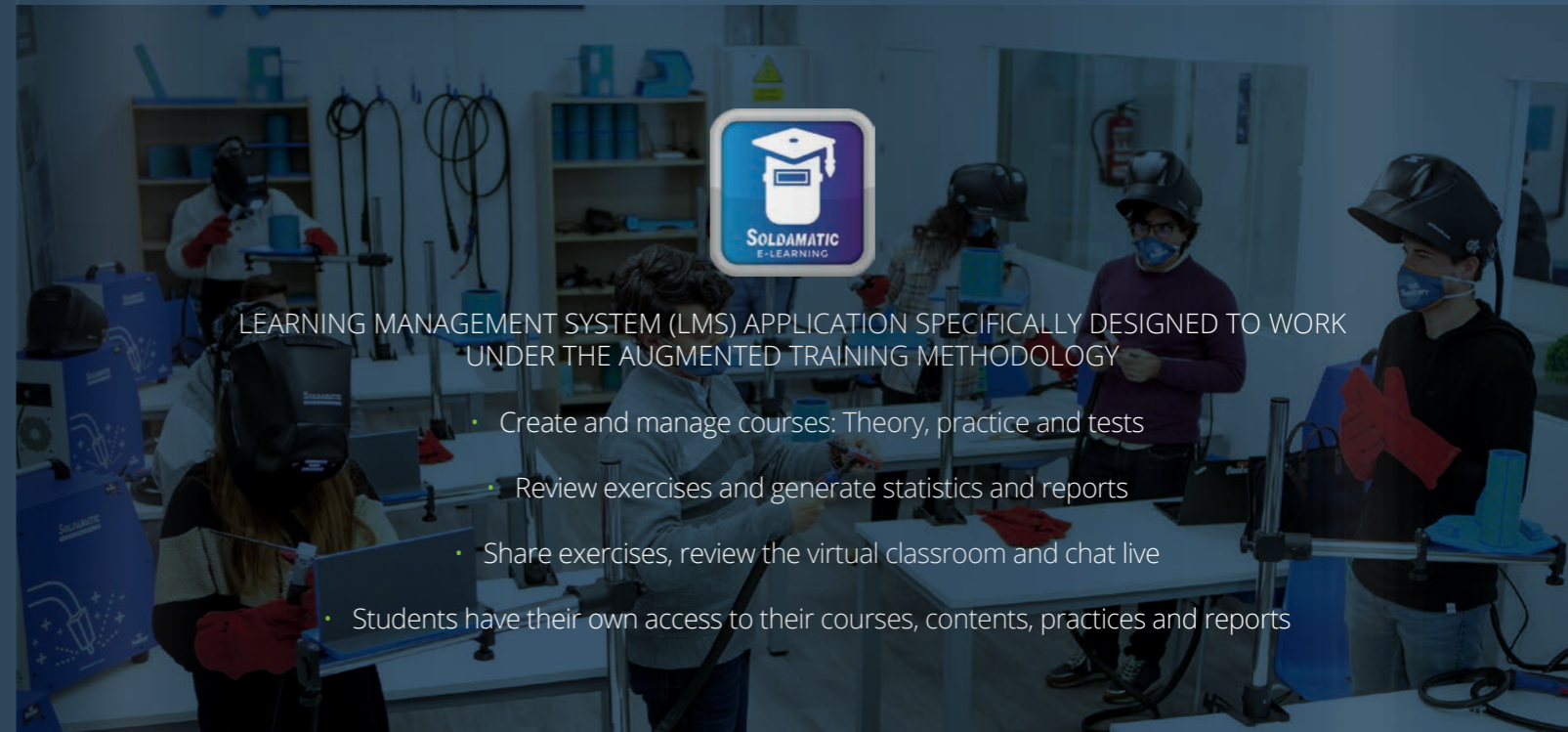
- **Transparent** and consistent learning experience from classroom or remote locations with **video capability**
- Real time server **connection is not required**, all information is updated once the connection is re-established
- Trainers and students can access the **virtual classroom**, share their screen and chat in real time



**SOLDAMATIC IE 4.0**  
ENABLES ASYNCHRONOUS LEARNING

## THE AUGMENTED TRAINING METHODOLOGY

- New educational paradigm
- Combine AR simulation with real welding practice
- Allows instructors to manage numerous courses and students



LEARNING MANAGEMENT SYSTEM (LMS) APPLICATION SPECIFICALLY DESIGNED TO WORK UNDER THE AUGMENTED TRAINING METHODOLOGY

- Create and manage courses: Theory, practice and tests
- Review exercises and generate statistics and reports
- Share exercises, review the virtual classroom and chat live
- Students have their own access to their courses, contents, practices and reports

CONTENT BY INTERNATIONAL PUBLISHERS

International  
Welding  
Experts



High quality welding curricula developed by international experts to be performed with Soldamatic IE.

# WELDING JOINTS

**MOST COMPREHENSIVE AND ADVANCED WELDING TRAINING JOINTS TO TRAIN EVERY TYPE AND LEVEL OF WELDER, AND NEARLY EVERY WELDING PROCESS SEQUENCE**

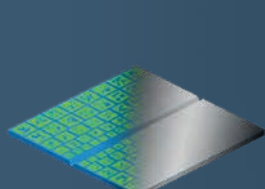


## EDUCATION WELDING JOINTS

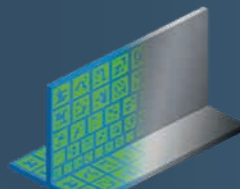
The most used welding joints for welding training in the world. UNE-EN ISO 9606 certified.



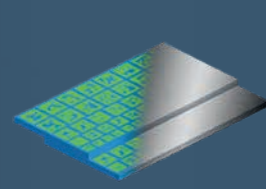
V-Butt pipe



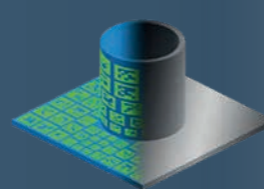
V-Butt plate



T-Angled plate to plate



Overlapped plate



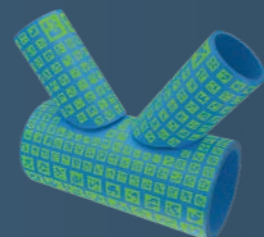
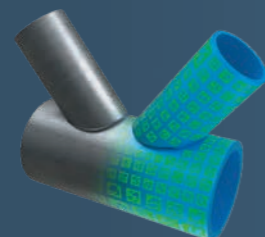
T-Angled pipe to plate

## INDUSTRIAL WELDING MULTIJOINTS

Bring real welding joints to Augmented Reality. Developed to cover specific welding training and performance needs.



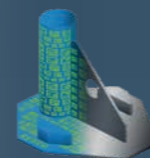
From real



To Augmented Reality

## ADVANCED WELDING MULTIJOINTS

Designed for vertical sectors and advanced welders.

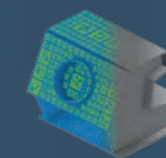


Foundational Ambidex

GMAW (MIG/MAG)  
Carbon Steel  
Positions: PB & PF



AWM-001

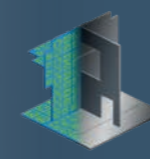


Foundational Complex Sequence

GMAW (MIG/MAG)  
Carbon Steel  
Positions: PB, PF, PD & PH



AWM-002



Heavy Industry Specific Practices

GMAW (MIG/MAG)  
Carbon Steel  
Positions: PB, PF, PD & PA



AWM-003



Automotive Chassis Assembly

GMAW (MIG/MAG)  
Pulsed Arc Aluminium  
Positions: PB



AWM-004

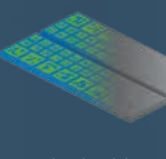


Automotive Thin Plates

GMAW (MIG/MAG)  
Aluminium  
Positions: PA, PB, PC, PD, PE, PF



AWM-005



Shipbuilding Open Root

GMAW (MIG/MAG)  
Carbon Steel  
Positions: PF



AWM-006



Shipbuilding Backing Strip

GMAW (MIG/MAG)  
Carbon Steel  
Positions: PF



AWM-007



Pipeline 6" Schedule 80

GMAW (MIG/MAG) & FCAW  
Carbon Steel  
Positions: 6G



AWM-008



Robotic Foundational "House"

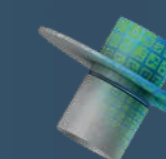


Robotic Foundational "Face"

GMAW (MIG/MAG)  
Carbon Steel  
Positions: PA



AWM-009/AWM-10



Pipeline 6GR

GMAW (MIG/MAG)  
Carbon Steel  
Positions: 6G



AWM011

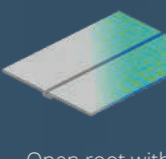


Pipeline Monster Coupon

GMAW (MIG/MAG)  
Carbon Steel  
Positions: 6G



AWM-012

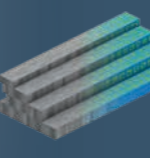


Open root with V-Groove

GMAW (MIG/MAG)  
Aluminium  
Positions: PA



AWM-013

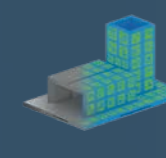


Foundational Multilap

GMAW (MIG/MAG) and GTAW Heliarc  
Carbon Steel  
Positions: PA



AWM-014



Robotic Foundational Assembly

GMAW (MIG/MAG)  
Carbon Steel  
Positions: PA



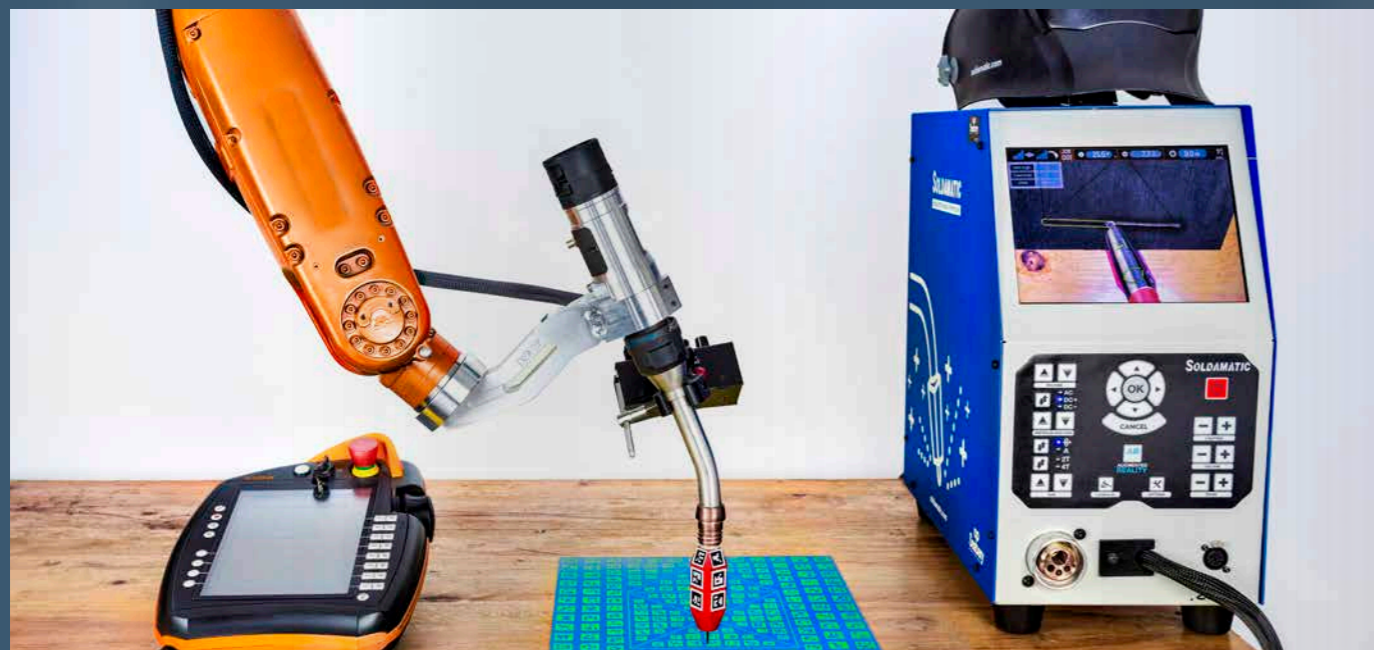
AWM-015

# SOLDAMATIC ROBOTICS

FIRST OF ITS KIND, COMPREHENSIVE AND PROGRAMMABLE ROBOTIC WELDING TRAINING

SOLDAMATIC IE ROBOTIC WELDING TRAINING PROVIDES:

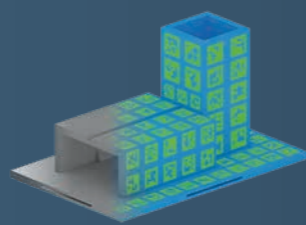
- Robotic welding training to create the 21<sup>st</sup> century skilled workforce.
- Allows programming of robots for specific welding routines.
- AR technology allows using the real teach pendant, real robot while reducing waste and cost.
- Review, analyze and inspect the welding bead during and after the simulation.



Introduction to robotic welding content included.



Soldamatic E-Learning connected to Robotics.



5 Education Welding Joints + 5 Advanced Welding Multijoints compatible.

# SOFTWARE FOR EVERY PURPOSE



Attract young people and modernize welding training programs.



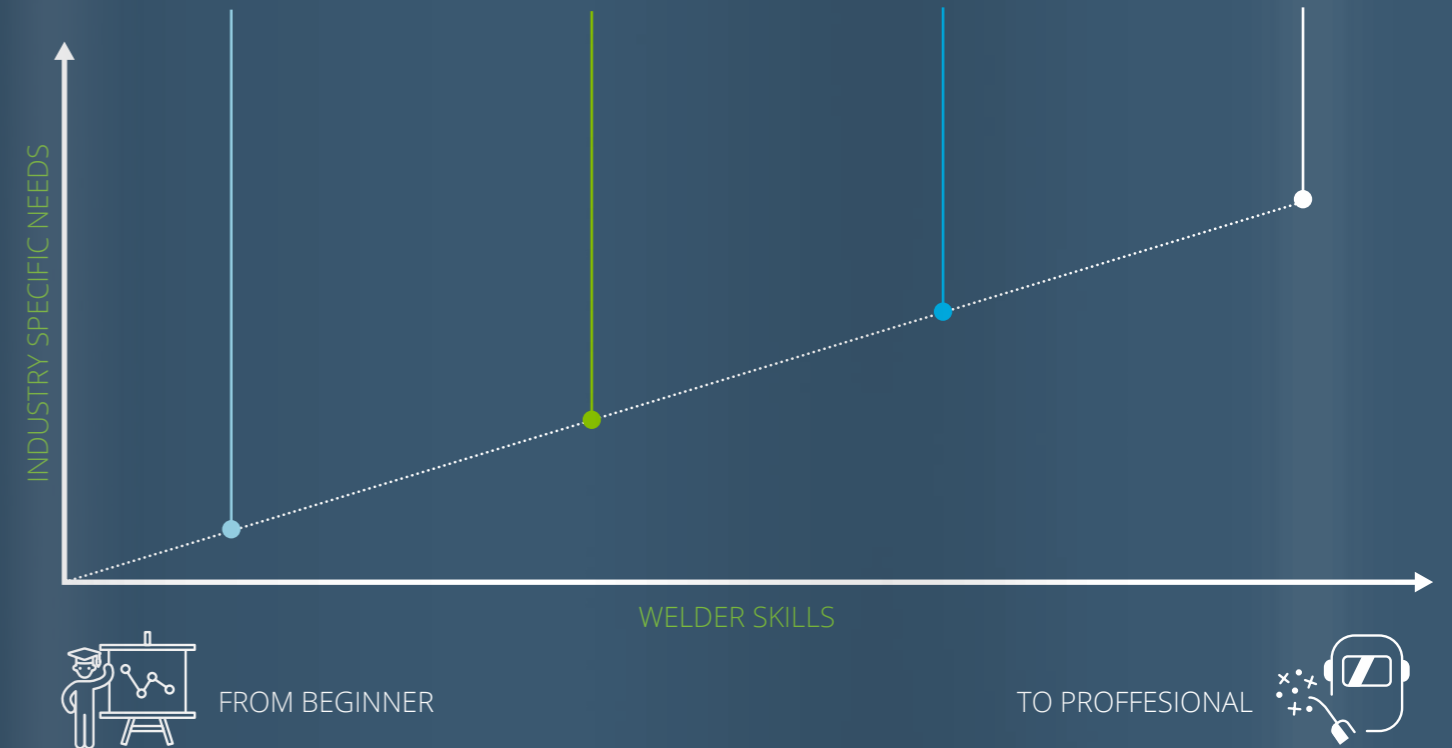
Cover industrial specific needs and requirements



Create the 21st century skilled workforce



Train professional welders on specific processes and real welding joints



SOLDAMATIC BUILDING THE NEXT GENERATION OF WELDERS






Seabery is the international leader in professional skills training with augmented reality-based simulation training solutions for the 21st century workforce, with partners and presence in more than 75 countries.

**SEABERYAT.COM**

Soldamatic is leading welding training with a State-of-the-art, Turn-Key, and Scalable solution to create the next generation of welders effectively and efficiently.

 Soldamatic  
by Seabery

 @seabery

 Seabery

 Seabery

More info at

**SOLDAMATIC.COM**  
**info@soldamatic.com**